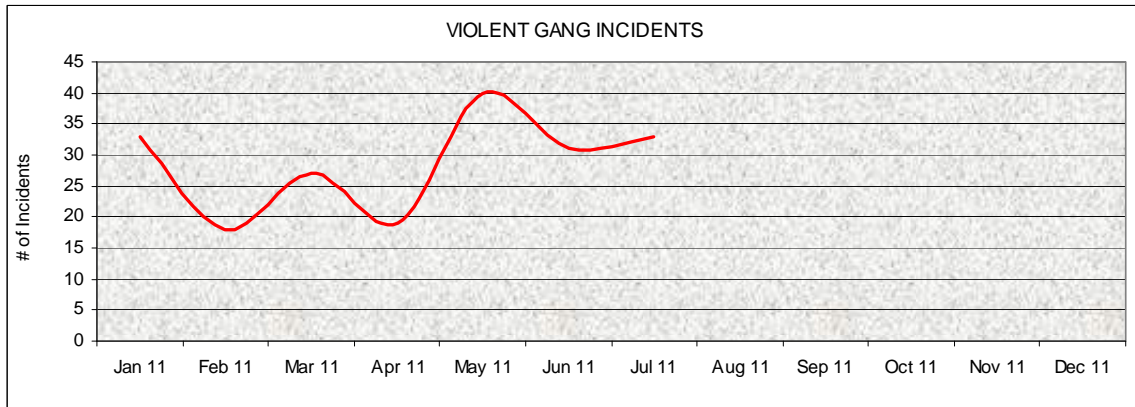
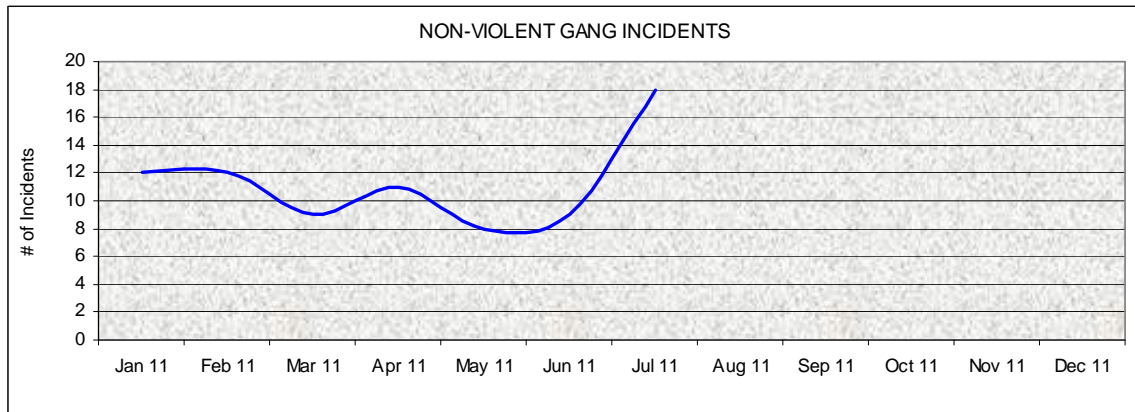


Twelve Month Trend of Gang Related Incidents Violent and Non-Violent Incidents Calendar Year 2011



Violent Incidents include Homicide, Attempted Homicide, Rape, Robbery, Aggravated and Simple Assaults

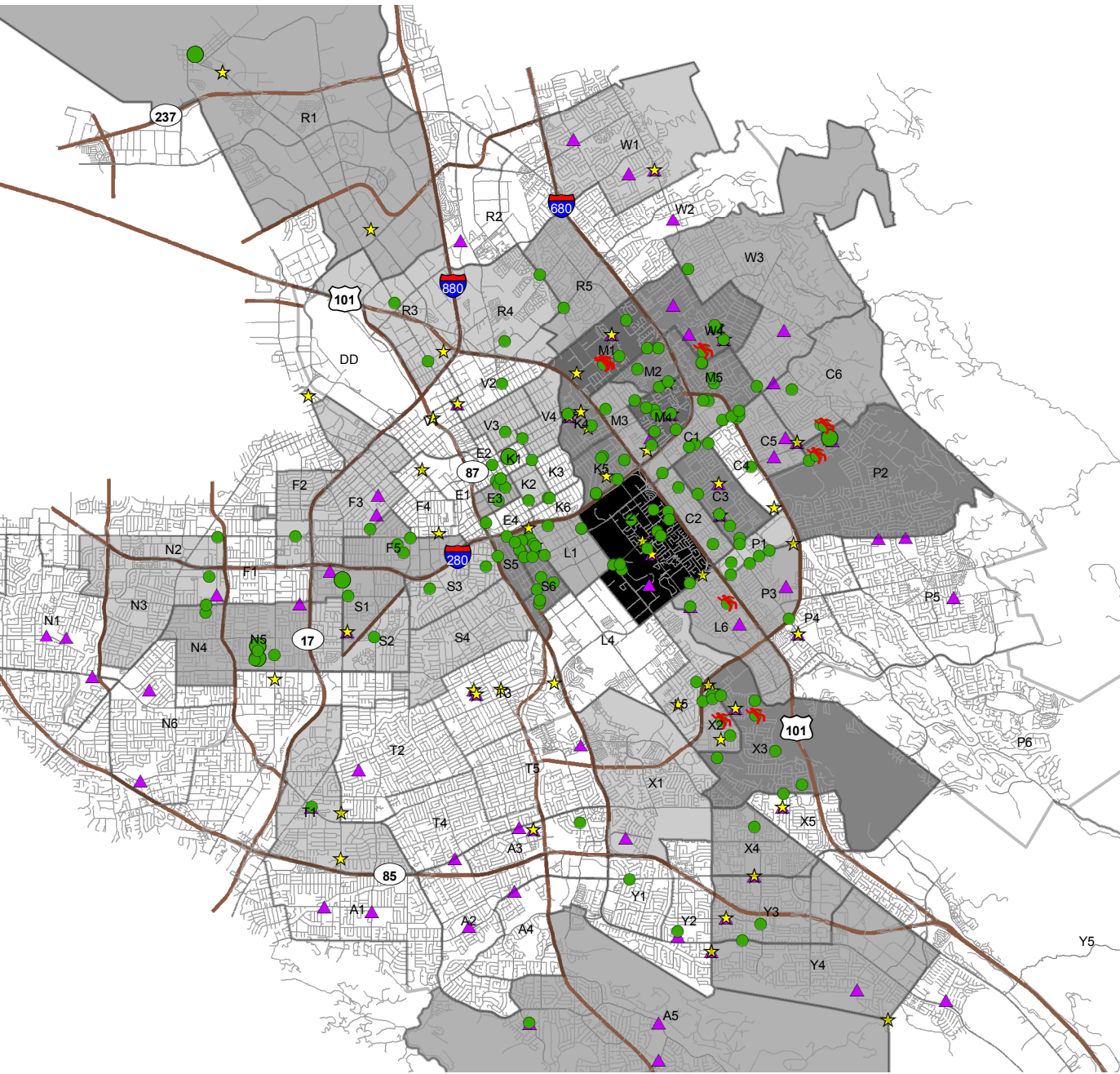


Non-Violent Incidents include Disturbances, Brandishing, Narcotics, Weapons and Probation Violations, etc

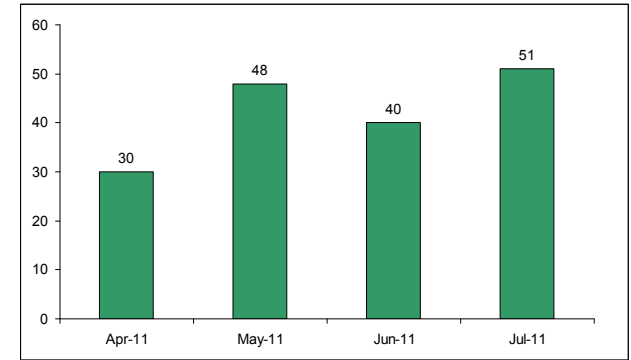


Density and Location of Gang Related Incidents

4.1.2011 - 7.31.2011



Total Number of Incidents
April 1, 2011 - July 31, 2011



Breakdown by Division

DIVISION	DIST	TOTAL	DIVISION	DIST	TOTAL
CENTRAL	E	8	SOUTHERN	A	2
	K	13		T	1
	R	7		X	12
	V	3		Y	4
CENTRAL Total		31	SOUTHERN Total		19
FOOTHILL	C	19	WESTERN	F	5
	M	25		L	18
	P	11		N	11
	W	7		S	18
FOOTHILL Total		62	WESTERN Total		52

- SSCI
- CBO
- Gang Related Homicide

Number of Incidents per Location

- 1
- 2

Number of Incidents per Beat

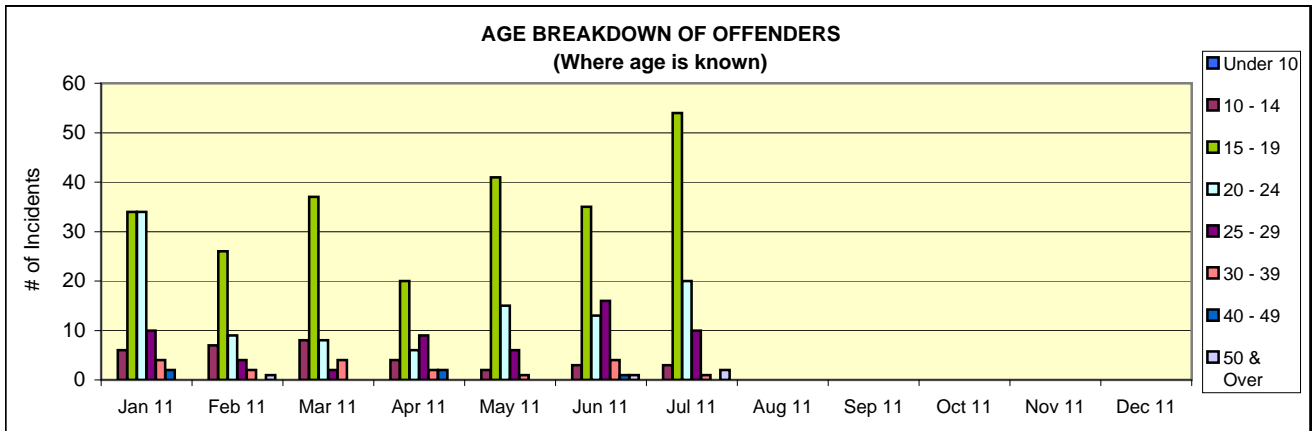
- 1
- 2 - 3
- 4 - 5
- 6 - 7
- 8 - 10

Source: SJPD GIU/Homicide

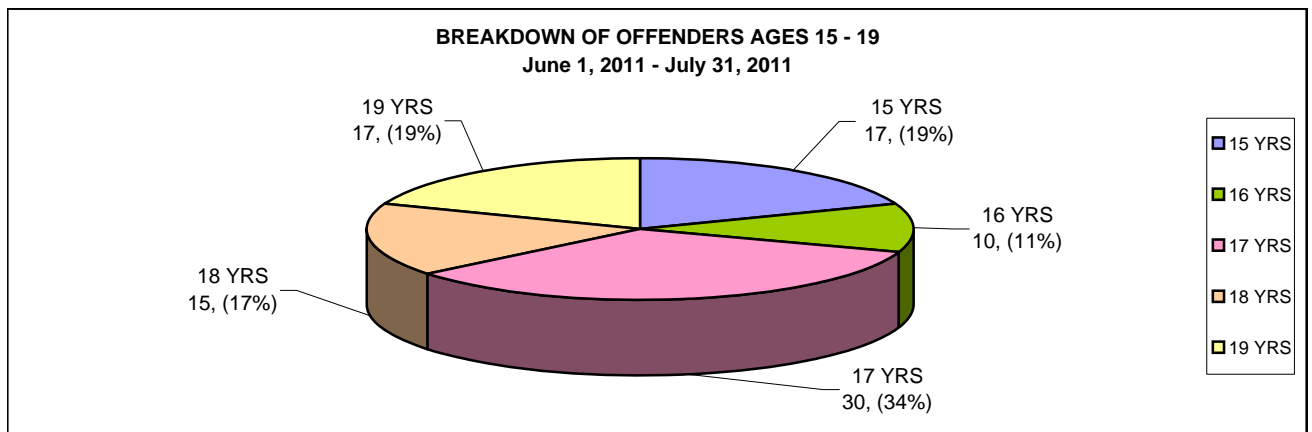


GANG RELATED INCIDENTS
AGE BREAKDOWN OF OFFENDERS
Calendar Year 2011

OFFENDER BREAKDOWN													
Age Range	Jan 11	Feb 11	Mar 11	Apr 11	May 11	Jun 11	Jul 11	Aug 11	Sep 11	Oct 11	Nov 11	Dec 11	Grand Total
Under 10													0
10 - 14	6	7	8	4	2	3	3						33
15 - 19	34	26	37	20	41	35	54						247
20 - 24	34	9	8	6	15	13	20						105
25 - 29	10	4	2	9	6	16	10						57
30 - 39	4	2	4	2	1	4	1						18
40 - 49	2			2		1							5
50 & Over		1				1	2						4
UNK	7	8	17	8	35	40	18						133
TOTAL	97	57	76	51	100	113	108	0	0	0	0	0	602
TOTAL JUVENILES	29	26	33	19	20	24	39	0	0	0	0	0	190
TOTAL ADULTS	68	31	43	32	80	89	69	0	0	0	0	0	412



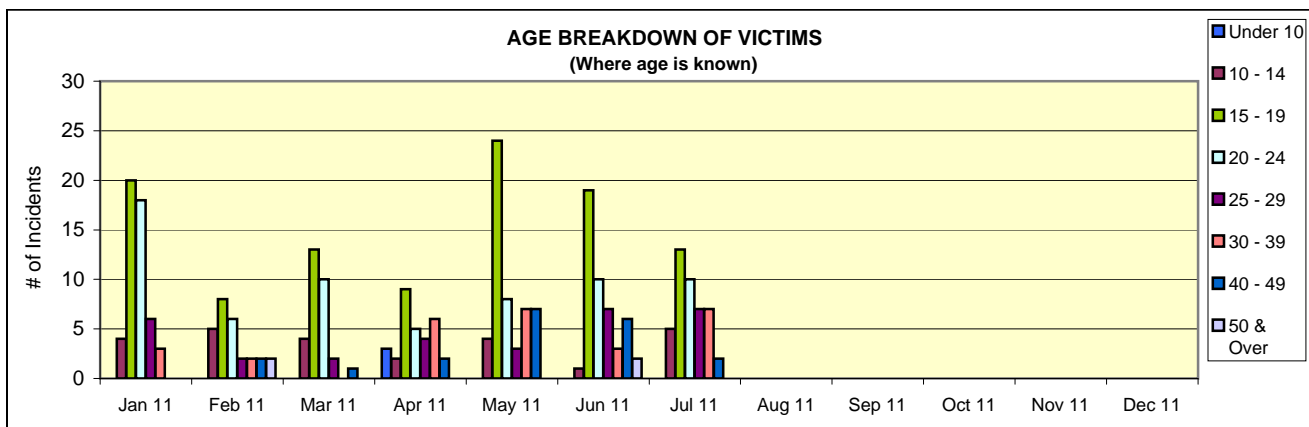
BREAKDOWN OF OFFENDER AGE RANGE 15 - 19													
Age	Jan 11	Feb 11	Mar 11	Apr 11	May 11	Jun 11	Jul 11	Aug 11	Sep 11	Oct 11	Nov 11	Dec 11	Grand Total
15	5	3	10	5	5	9	8						45
16	6	11	12	7	6	3	7						52
17	12	5	3	3	7	9	21						60
18	3	4	8	2	11	7	8						43
19	8	3	4	3	12	7	10						47
TOTAL	34	26	37	20	41	35	54	0	0	0	0	0	247



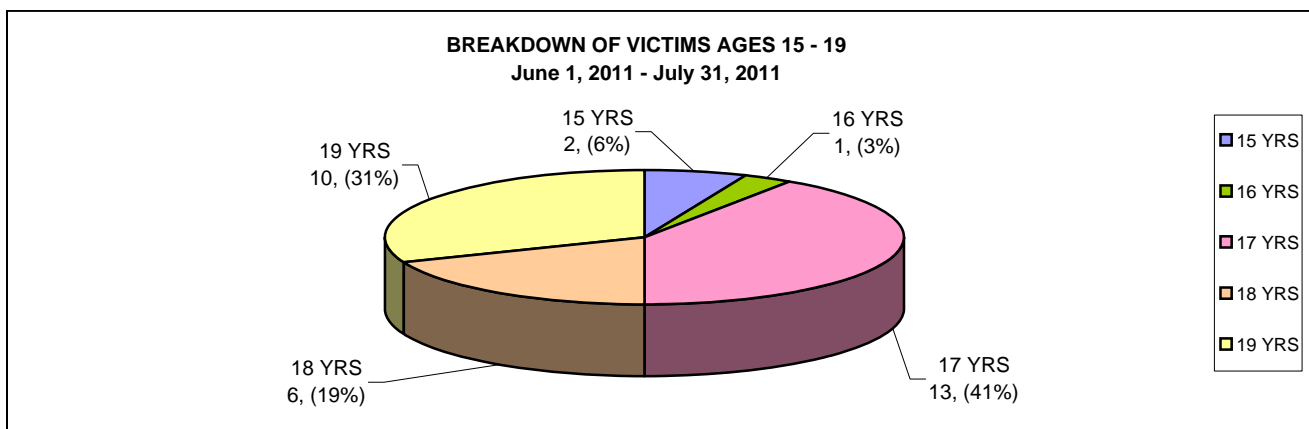
Note: One case may have multiple offenders. Conversely, a case may not have a victim as both parties were arrested/ cited or victim is a business.

GANG RELATED INCIDENTS
AGE BREAKDOWN OF VICTIMS
Calendar Year 2011

VICTIM BREAKDOWN													
Age Range	Jan 11	Feb 11	Mar 11	Apr 11	May 11	Jun 11	Jul 11	Aug 11	Sep 11	Oct 11	Nov 11	Dec 11	Grand Total
Under 10				3									3
10 - 14	4	5	4	2	4	1	5						25
15 - 19	20	8	13	9	24	19	13						106
20 - 24	18	6	10	5	8	10	10						67
25 - 29	6	2	2	4	3	7	7						31
30 - 39	3	2		6	7	3	7						28
40 - 49		2	1	2	7	6	2						20
50 & Over		2				2							4
UNK		2		1	4	2	7						16
TOTAL	51	29	30	32	57	50	51	0	0	0	0	0	300
TOTAL JUVENILES	17	12	12	8	16	12	10	0	0	0	0	0	87
TOTAL ADULTS	34	17	18	24	41	38	41	0	0	0	0	0	213



BREAKDOWN OF VICTIM AGE RANGE 15 - 19													
Age	Jan 11	Feb 11	Mar 11	Apr 11	May 11	Jun 11	Jul 11	Aug 11	Sep 11	Oct 11	Nov 11	Dec 11	Grand Total
15	4	1	4		3	1	1						14
16	5	2	3	2	7		1						20
17	4	4	1	4	2	10	3						28
18	3	1	2	1	7	2	4						20
19	4		3	2	5	6	4						24
TOTAL	20	8	13	9	24	19	13	0	0	0	0	0	106



Note: One case may have multiple offenders. Conversely, a case may not have a victim as both parties were arrested/ cited or victim is a business.