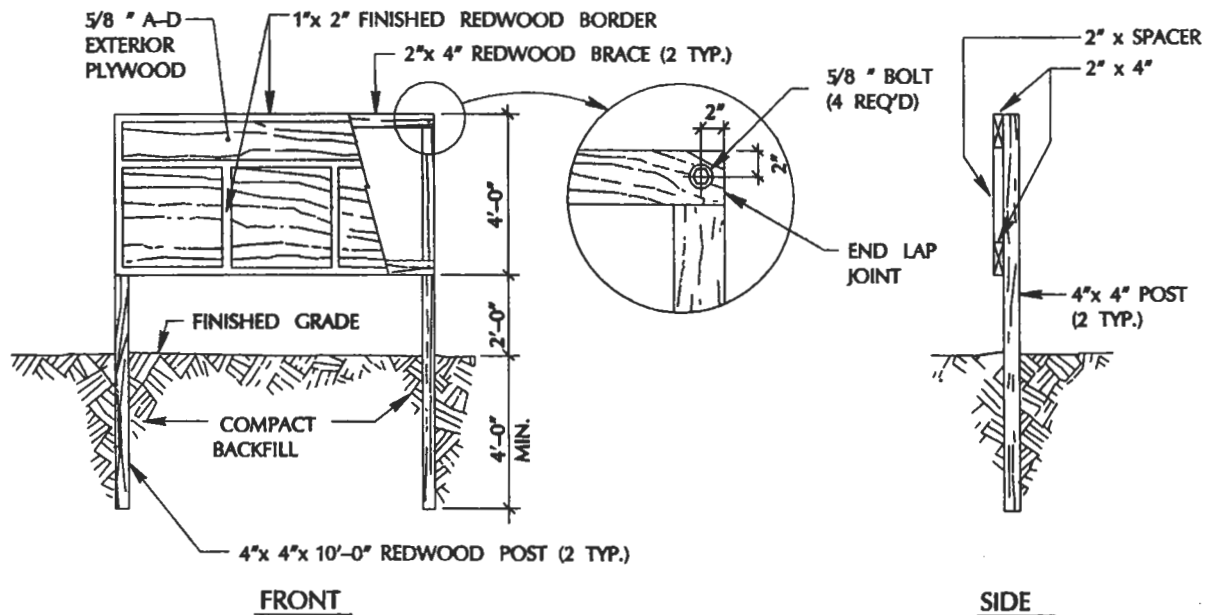


- NOTES:**
1. SEAL SHALL BE SUPPLIED BY THE CITY.
 2. ALL LETTERS SHALL BE PAINTED BLACK AND 'FUTURA' STYLE.
 3. SIGN SHALL BE BOLTED TO (2) 4"x 4"x 10'-0" LONG REDWOOD POSTS.
 4. SIGN SHALL BE LOCATED IN THE FIELD BY THE CITY INSPECTOR.
 5. CONTRACTOR SHALL REMOVE THE SIGN AS DIRECTED BY THE ENGINEER.
 6. CONTRACTOR SHALL BE NOTIFIED AT THE PRE-CONSTRUCTION MEETING ON THE NECESSARY WORDING TO BE PAINTED ON THE PROJECT SIGN.



APPROVED BY

[Signature]

DATE

4/3/92

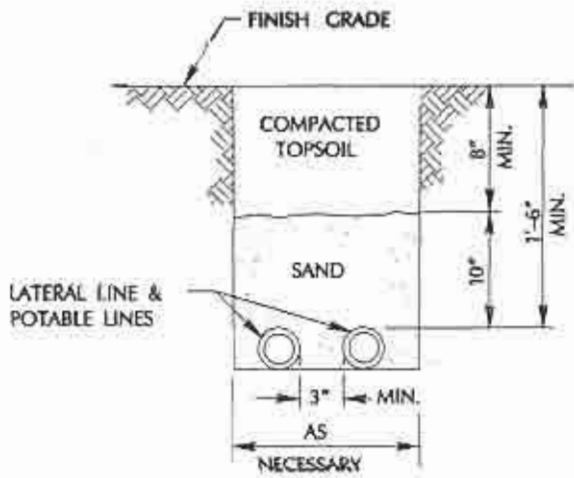
PROJECT SIGN

DEPARTMENT OF PUBLIC WORKS

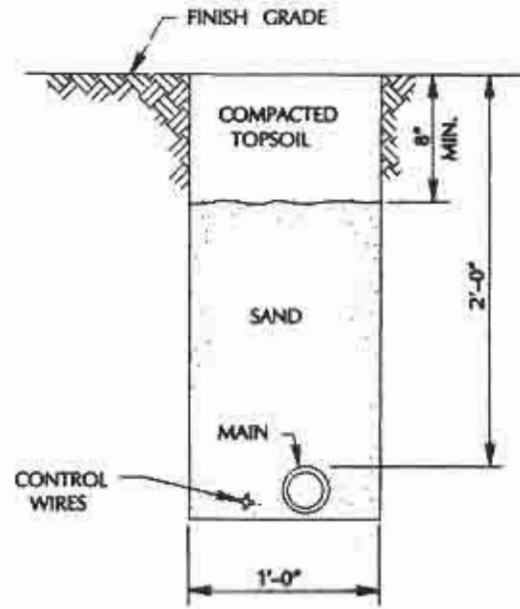


DRAWING NO.

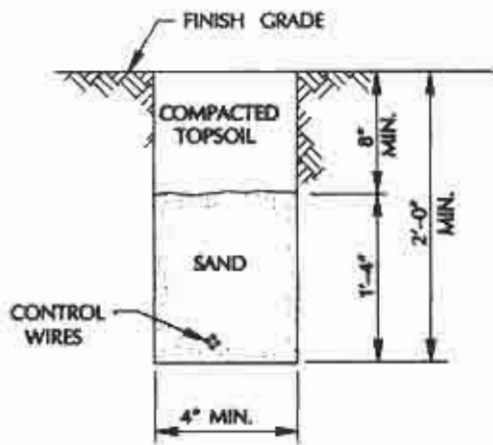
L-1



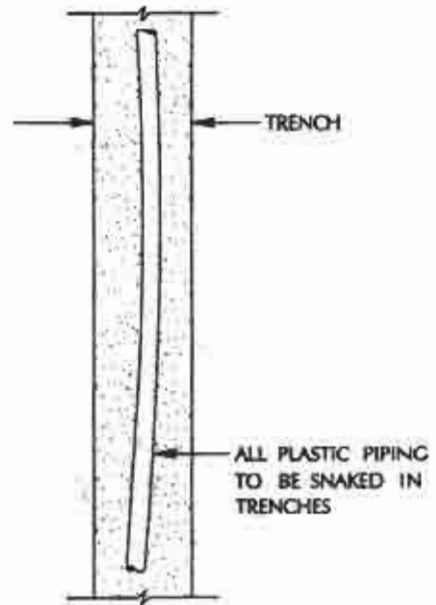
LATERAL LINE AND
POTABLE LINE



MAIN & CONDUCTORS



CONDUCTORS ONLY



NOTE: TAPE AND BUNDLE WIRING AT 10 FOOT INTERVALS.

APPROVED BY

[Signature]

DATE

1/20/19

IRRIGATION TRENCH

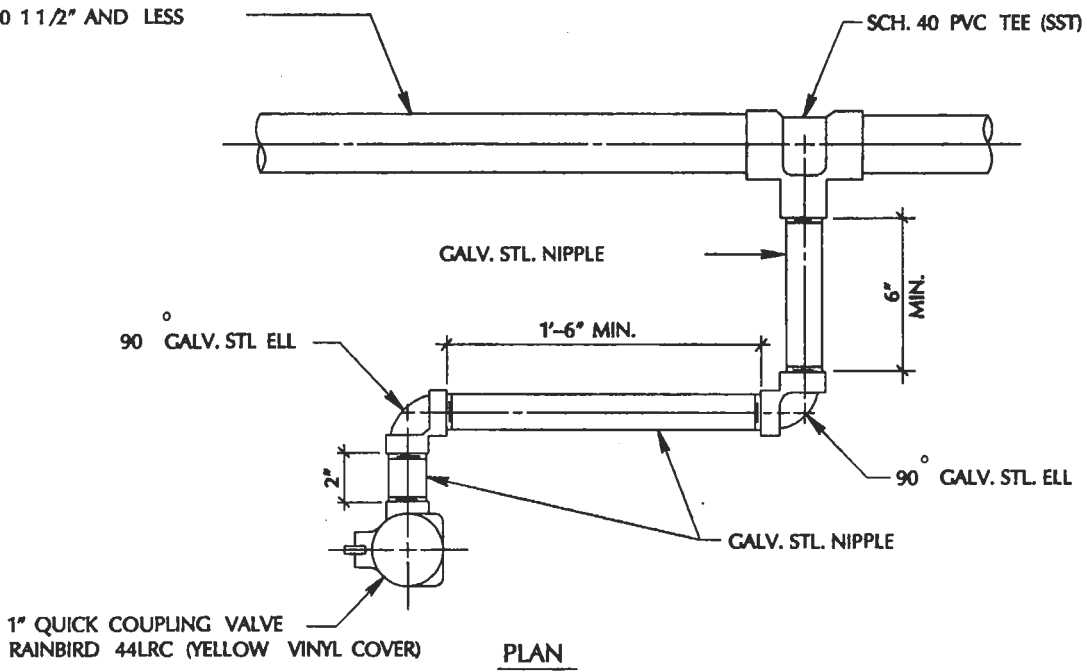
DEPARTMENT OF PUBLIC WORKS



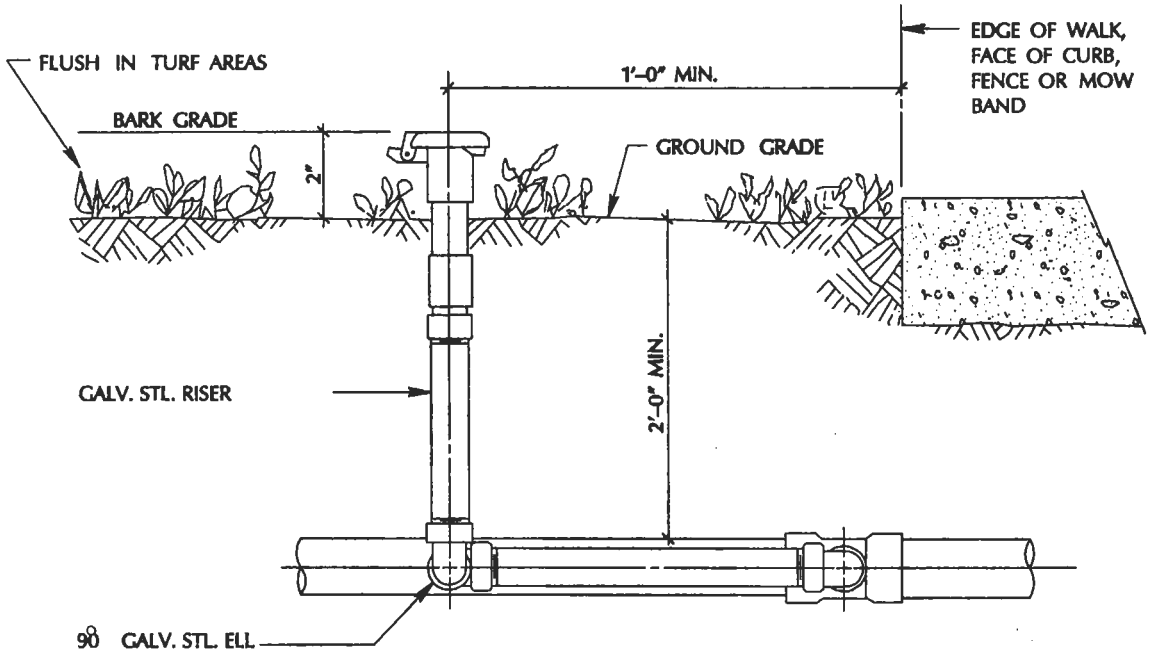
DRAWING
NO.

L-2

CLASS 315 PVC MAIN, 2" MIN.
SCH. 40 1 1/2" AND LESS



PLAN



PROFILE

- NOTES:**
1. ALL GALVANIZED CONNECTIONS AND EXPOSED THREADED AREAS SHALL BE HEAVILY COATED WITH PIPE JOINT COMPOUND. TEFLON TAPE SHALL NOT BE ACCEPTABLE.
 2. STREET ELLS SHALL NOT BE ACCEPTABLE.

APPROVED BY
[Signature]
DATE
11/20/11

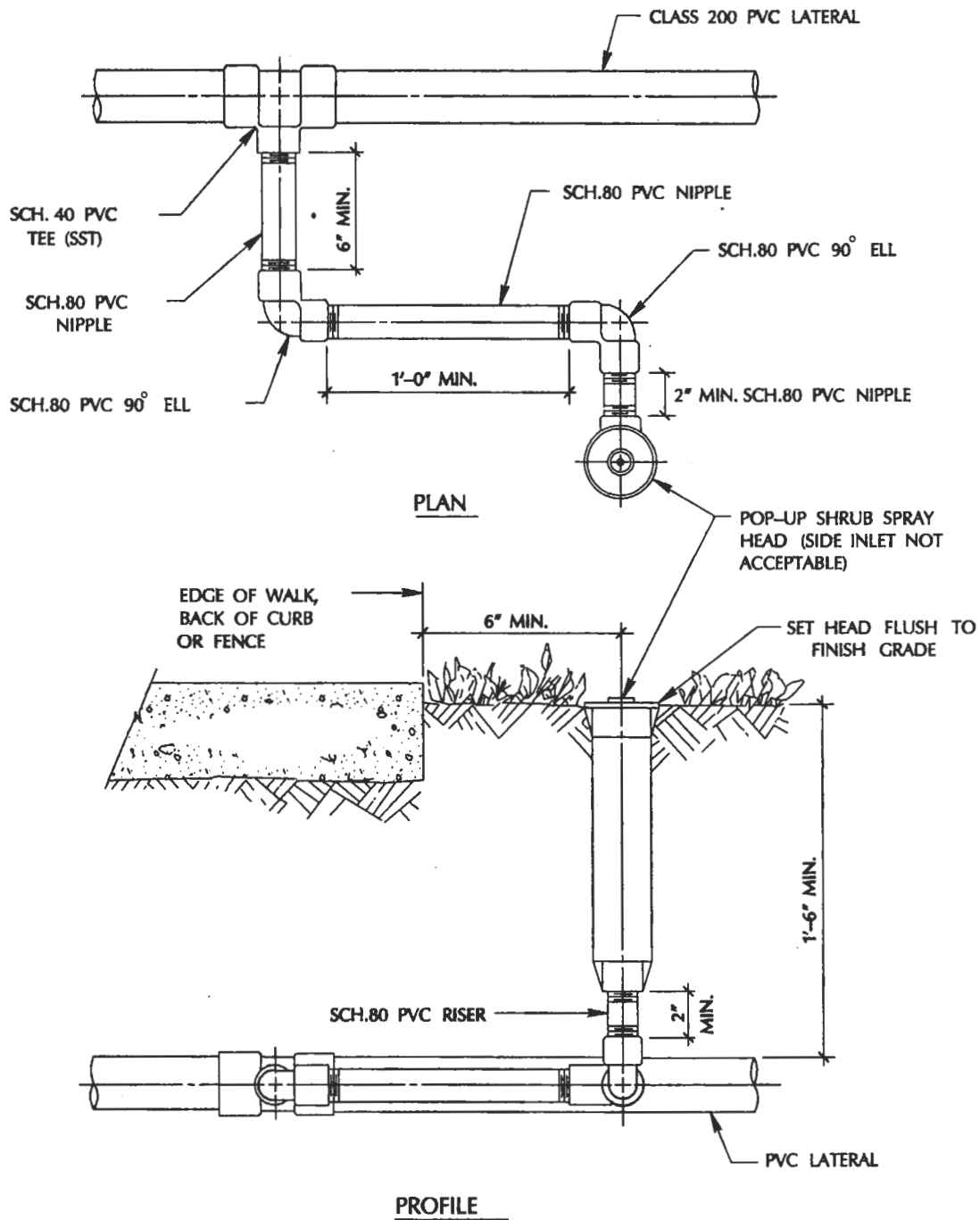
**QUICK COUPLING VALVE
(FOR PARKS, MEDIANS & BACK-UPS)**

DEPARTMENT OF PUBLIC WORKS



DRAWING NO.

L-3



- NOTES:**
1. ALL ELEMENTS OF SWING JOINTS SHALL BE AS SHOWN AND OF THE SAME DIAMETER AS THE BASE OF HEAD BEING USED.
 2. STREET ELLS SHALL NOT BE ACCEPTABLE.

APPROVED BY
[Signature]

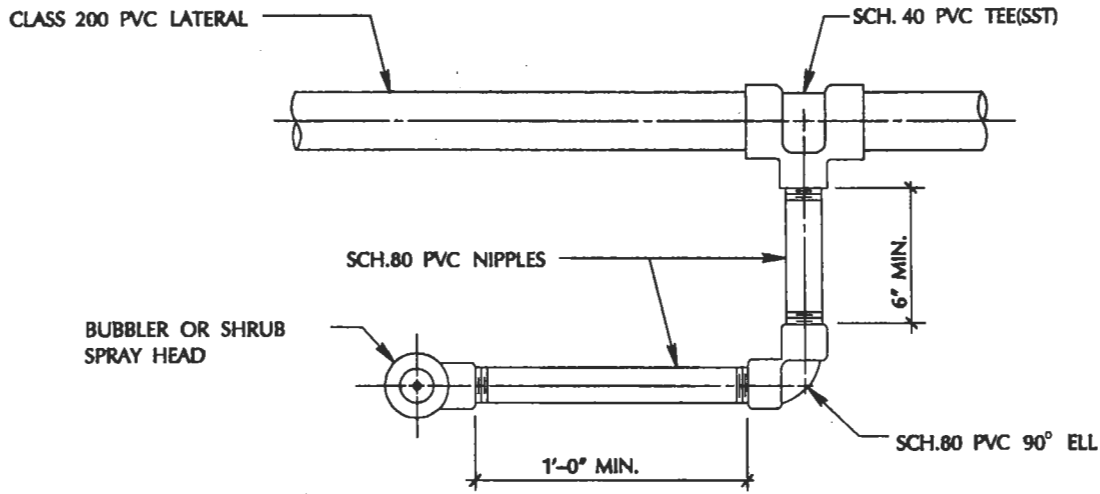
DATE
 11/20/91

**HIGH POP-UP SHRUB HEAD
 (FOR MEDIANS & BACK-UPS ONLY)**

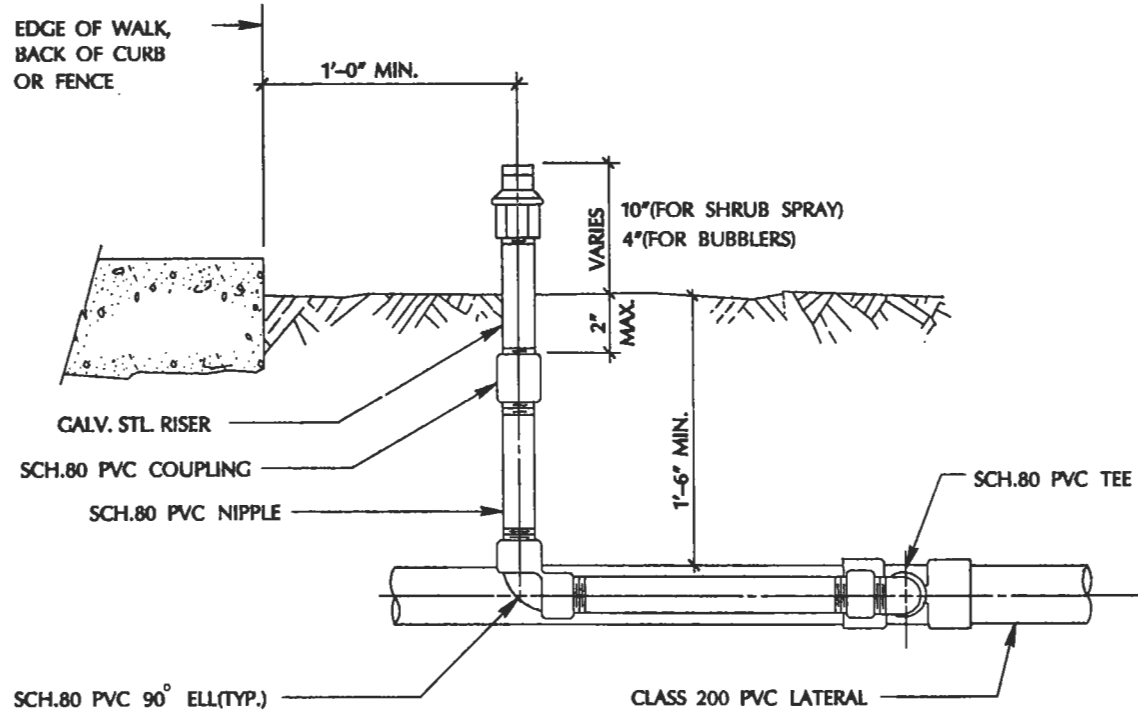
DEPARTMENT OF PUBLIC WORKS



DRAWING NO.
 L-4





PLAN

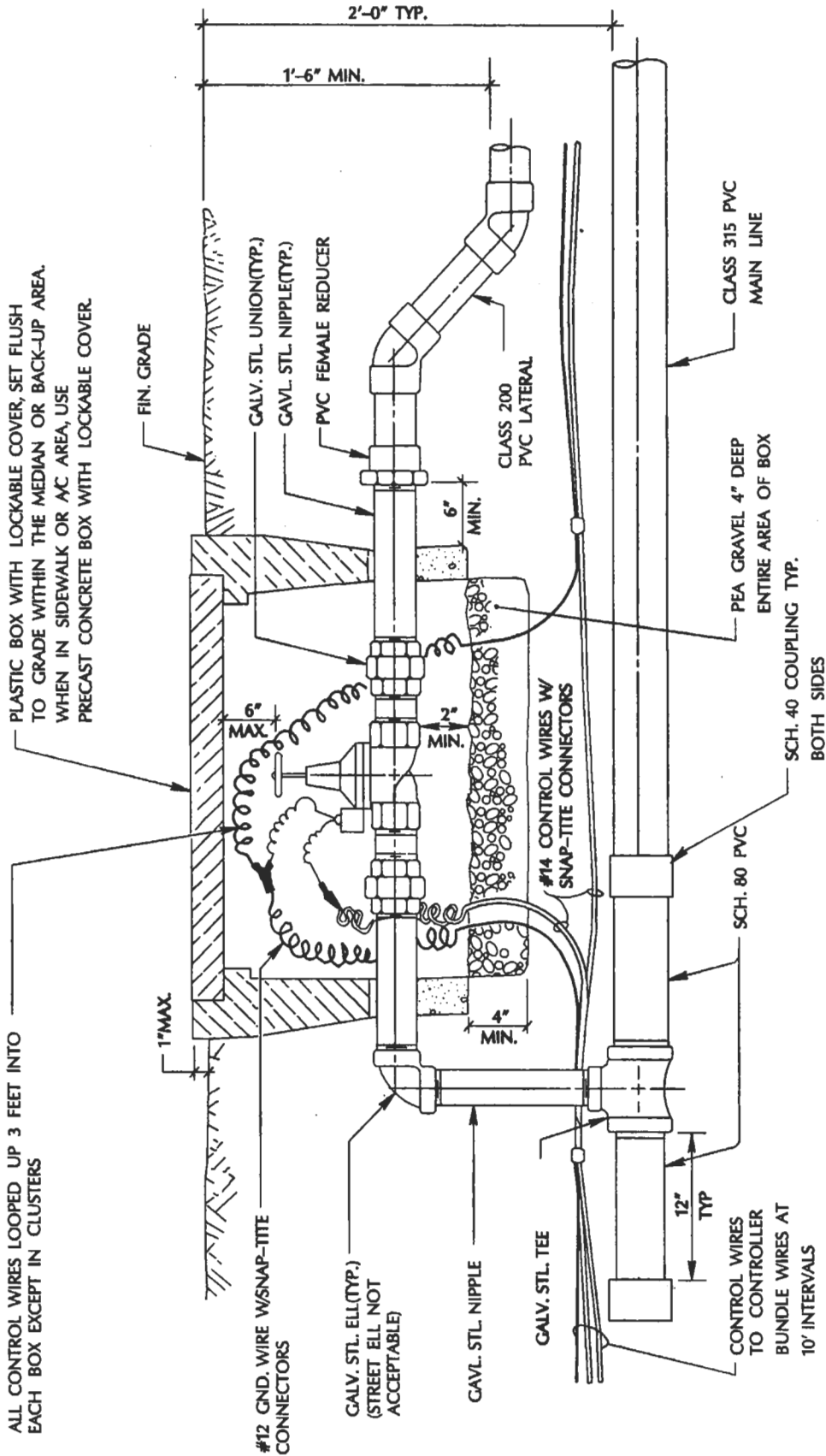


PROFILE

- NOTES:**
1. ALL ELEMENTS OF SWING JOINTS SHALL BE AS SHOWN AND OF THE SAME DIAMETER AS THE BASE OF HEAD BEING USED.
 2. ALL GALVANIZED CONNECTIONS SHALL BE COATED WITH PIPE JOINT COMPOUND. ALL EXPOSED THREAD AREAS SHALL BE HEAVILY COATED WITH COMPOUND. TEFLON TAPE SHALL NOT BE ACCEPTABLE.
 3. STREET ELLS SHALL NOT BE ACCEPTABLE.

APPROVED BY 	<p align="center">BUBBLERS AND SHRUB SPRAY HEADS (FOR MEDIANS & BACK-UPS ONLY)</p>		DRAWING NO. <p align="center">L-5</p>
DATE 4/3/92			DEPARTMENT OF PUBLIC WORKS

NOTE: EACH VALVE SHALL BE PROVIDED WITH AN EMBOSSED PLASTIC OR METAL TAG SHOWING CONTROLLER & STATION NUMBER.



NOTE: ALL THREADED AREAS SHALL BE HEAVILY COATED WITH PIPE JOINT COMPOUND.

APPROVED BY

[Signature]

DATE

1 0

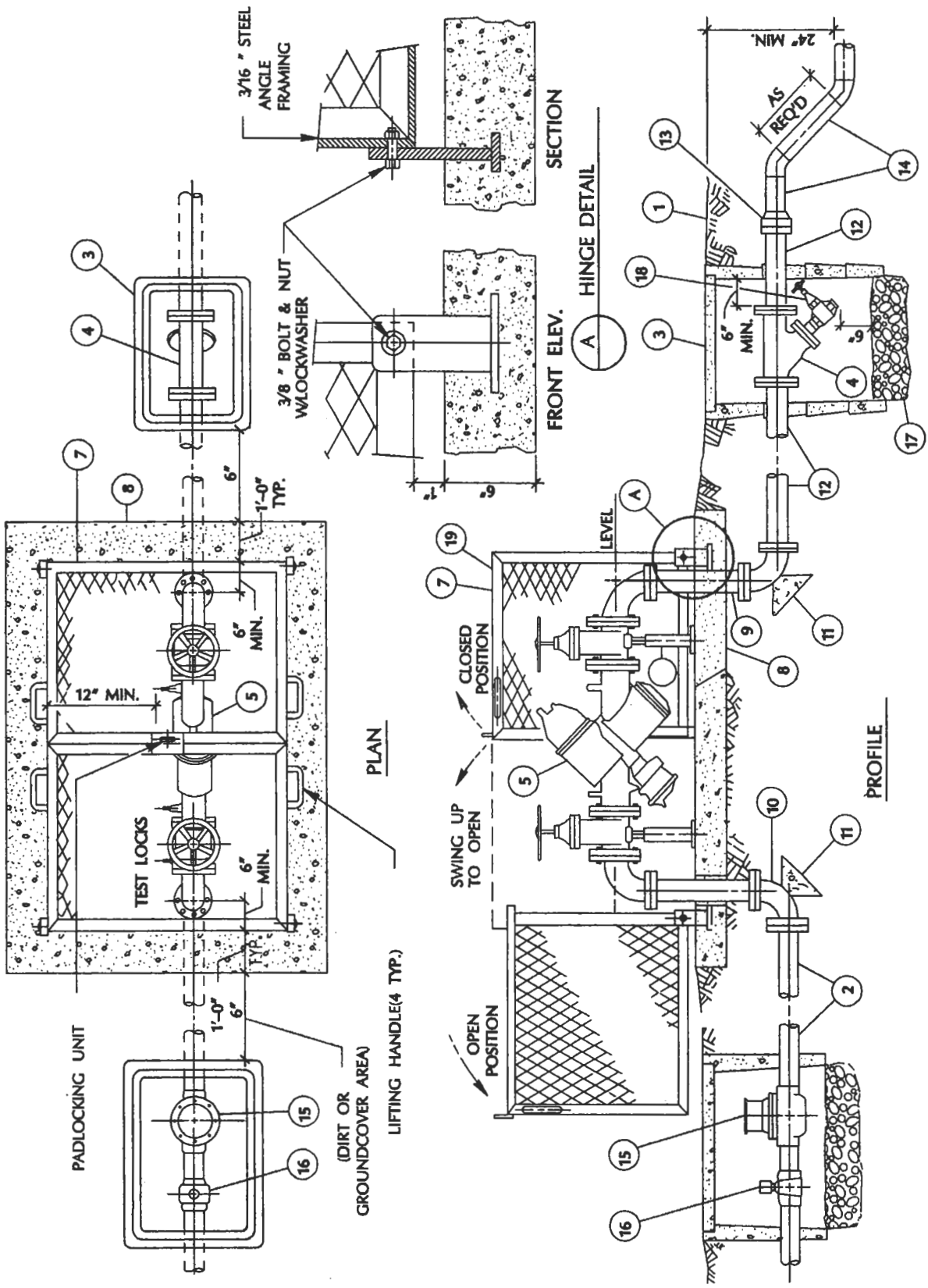
**REMOTE CONTROL VALVE
WITHOUT Q.C. VALVE
(FOR MEDIANS AND BACK-UPS ONLY)**

DEPARTMENT OF PUBLIC WORKS



DRAWING NO.

L-6



(FOR MEDIAN ISLAND & NEIGHBORHOOD JOBS)
 (FOR SIZES 2 1/2" TO 4" WILKINS-575RP BACKFLOW UNITS)

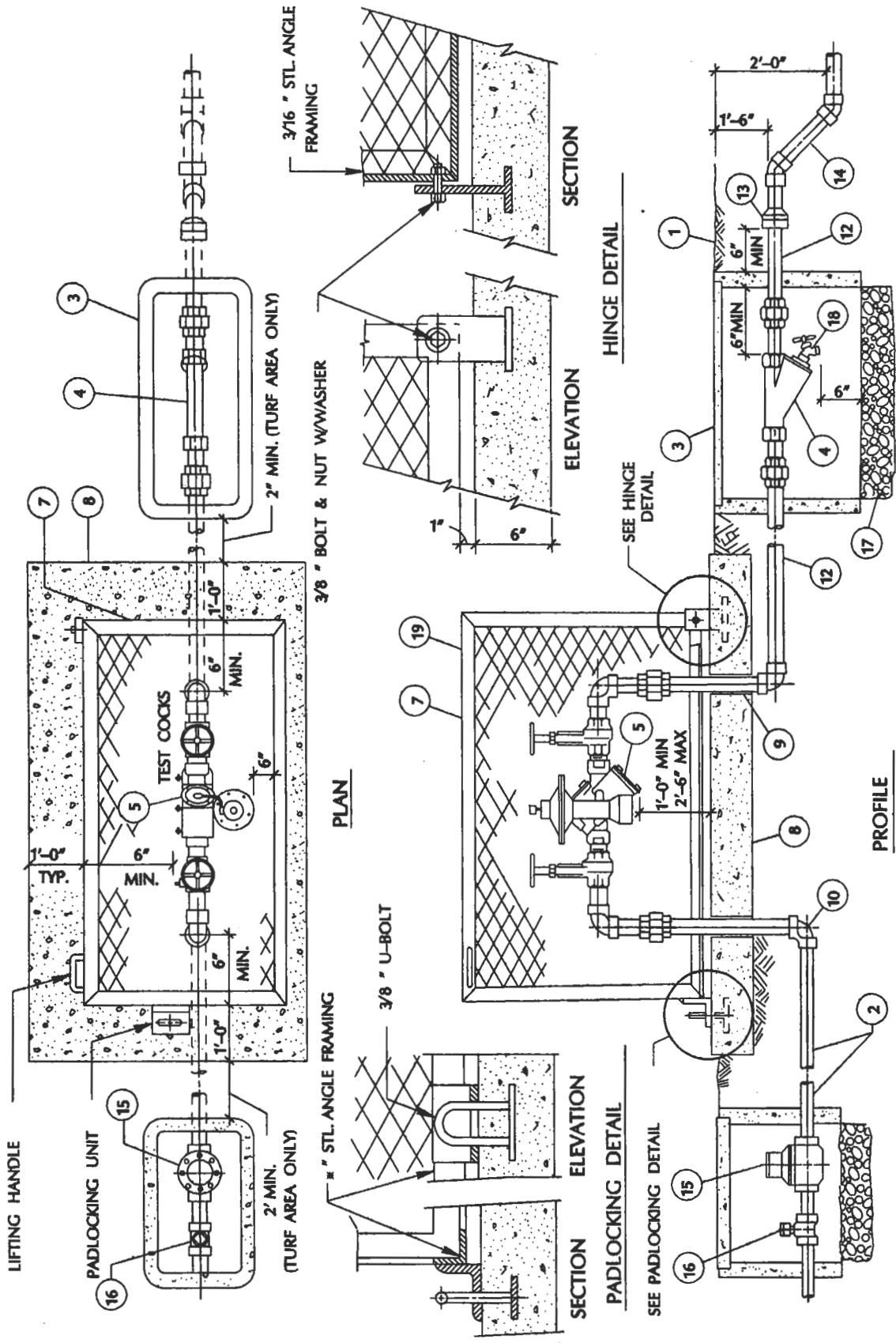
APPROVED BY
[Signature]
 DATE
 4/3/92

**R.P. BACKFLOW PREVENTER WITH
 DOUBLE-SWING HINGED ENCLOSURE**

DEPARTMENT OF PUBLIC WORKS



DRAWING NO.
 L-7



FOR MEDIAN ISLAND AND NEIGHBORHOOD JOBS
 (FOR SIZES 3/4" TO 2" WILKINS-575RP BACKFLOW UNITS)

APPROVED BY
[Signature]

DATE
 4/3/92

**R.P. BACKFLOW PREVENTER WITH
 SINGLE-SWING HINGED ENCLOSURE**

DEPARTMENT OF PUBLIC WORKS



DRAWING NO.
L-8

LEGEND:

- ① FINISH GRADE.
- ② SERVICE SIZE GALVANIZED STEEL PIPE FROM WATER METER.
- ③ PRECAST CONCRETE BOX AND TRAFFIC LID WITH EXTENSIONS, AS NECESSARY (SEE 'TABLE B- STRAINER UNIT DIMENSIONS').
- ④ Y-STRAINER SIMILAR TO BAILEY NO.100-A (SIZE AS SHOWN ON THE PLAN) WITH BLOW-OFF GATE VALVE, SPLIT-WEDGE TYPE, SIZED TO MATCH THE STRAINER BLOW-OFF OPENING AND INSTALLED AS SHOWN (FOR PARKS CONSTRUCTION ONLY).
- ⑤ REDUCED PRESSURE BACKFLOW PREVENTER. WILKINS 575RP FOR SIZES 3/4 " THROUGH 2" AND FOR SIZES 2 1/2 " THROUGH 4". UNIT SHALL BE SIZED AND INSTALLED AS SHOWN ON THE PLAN.
- ⑥ ADJUSTABLE PIPE SADDLE SUPPORT, GALVANIZED STEEL, SUITABLE FOR SUPPORTING GENERAL PIPING 3" AND LARGER, FROM FLOOR.
- ⑦ BACKFLOW PREVENTER ENCLOSURE MANUFACTURED BY LEMEUR. ENCLOSURE SHALL BE SINGLE- SWING TYPE FOR BACKFLOW UNIT SIZES 3/4 " THROUGH 2" AND DOUBLE- SWING ("CLAM SHELL") TYPE FOR SIZES 2 1/2 " THROUGH 4". FRAME SHALL BE 1 1/2 "x 1 1/2 "x 3/16 " STEEL ANGLE WITH 1 1/2 " #9 EXPANDED METAL, (SEE 'TABLE A - BACKFLOW UNIT DIMENSIONS' FOR SIZE REQUIREMENT) INSTALL AS SHOWN ON THE PLAN.
- ⑧ 6" CONCRETE ENCLOSURE PAD, SIZE AS SHOWN ON THE PLAN.
- ⑨ SERVICE SIZE GALV. STEEL PIPE RISER WITH A MINIMUM OF TWO (2) UNIONS FOR THREADED CONNECTIONS.
- ⑩ GALV. STEEL 90° ELL, FLANGED OR THREADED, SIZED AND INSTALLED AS SHOWN.
- ⑪ CONCRETE THRUST BLOCK (SEE PAGE W-7 OF THE STANDARD PLAN DETAILS FOR PUBLIC WORKS CONSTRUCTION).
- ⑫ SERVICE SIZE GALV. STEEL PIPE RISER WITH A MINIMUM OF TWO (2) UNIONS FOR THREADED CONNECTIONS.
- ⑬ PVC FEMALE ADAPTER.
- ⑭ MAIN PIPE, CLASS 315 PVC (SIZE AS SHOWN ON THE PLAN).
- ⑮ WATER METER BY OTHERS (SIZE AS SHOWN).
- ⑯ SHUT- OFF COCK BY OTHERS.
- ⑰ 3/4 " TO 1" SMOOTH DRAIN ROCKS, 6" DEPTH, MIN.
- ⑱ SIZE OF SHUT- OFF VALVE SHALL MATCH BLOW-OFF OPENING.
- ⑲ TWO COATS OF ENAMEL COLOR SPECIFIED BY THE ENGINEER.

NOTES:

1. GATE VALVES AND TEST COCKS ARE REQUIRED.
2. WATER SUPPLY- NO CONNECTIONS OR TEES WILL BE ALLOWED BETWEEN THE WATER METER AND BACKFLOW UNIT.
3. PROTECTION FROM FREEZE DAMAGE MAY BE REQUIRED IN EXPOSED AREAS.
4. DEVICE MUST BE ACCESSIBLE FOR TESTING AND MAINTENANCE.
5. WRAP BURIED GALVANIZED PIPE WITH 3M TAPE AS USED FOR GAS MAINS.

APPROVED BY

[Signature]

DATE

11/20/91

**BACKFLOW PREVENTER UNIT
LEGEND & NOTES**

DEPARTMENT OF PUBLIC WORKS



DRAWING
NO.



L-9

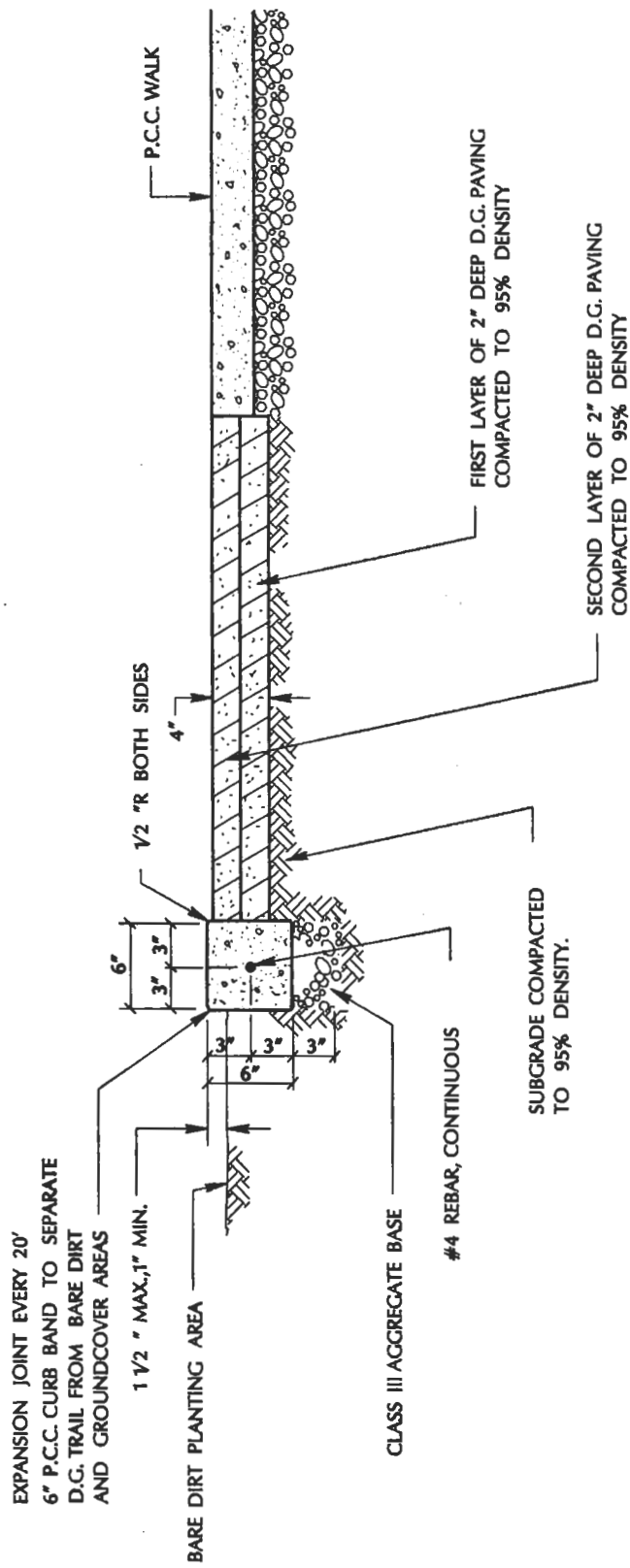
TABLE A - BACKFLOW UNIT DIMENSIONS

SIZE	WILKINS RP BACKFLOW PREVENTER			MINIMUM ENCLOSURE DIMENSIONS			
	MODEL	LENGTH	TYPE	W	L	H	TYPE
3/4 "	575 RP	11 3/8 "	SCREWED	12"	30"	30"	SINGLE - SWING HINGE
1"	575 RP	11 3/8 "	SCREWED	12"	30"	30"	SINGLE - SWING HINGE
1 1/2 "	575 RP	16 1/4 "	SCREWED	18"	42"	30"	SINGLE - SWING HINGE
2"	575 RP	16 1/4 "	SCREWED	18"	42"	30"	SINGLE - SWING HINGE
3"	575 RP	36"	FLANGED	30"	72"	42"	DOUBLE - SWING HINGE
4"	575 RP	46 1/2 "	FLANGED	30"	84"	42"	DOUBLE - SWING HINGE

TABLE B - STRAINER UNIT DIMENSIONS

SIZE	BAILEY NO. 100-A Y-STRAINER			REQUIRED CONCRETE BOX & TRAFFIC LID	
	LENGTH	CONN.	BLOW-OFF	CHRISTY MODEL	INSIDE DIMENSIONS
3/4 "-1"	4 1/2 "	SCREWED	1/2 "- 3/4 "	B-3	9 7/8 " x 16 1/4 "
1 1/2 "	6"	SCREWED	3/4 "	B-3	9 7/8 " x 16 1/4 "
2"	7 3/8 "	SCREWED	3/4 "	B-30	13 1/4 " x 24"
2 1/2 "	10 1/2 "	FLANGED	1 1/4 "	B-30	13 1/4 " x 24"
3"	12"	FLANGED	1 1/4 "	B-30	13 1/4 " x 24"
4"	14 9/16 "	FLANGED	1 1/2 "	B-30	13 1/4 " x 24"

APPROVED BY 	<h2 style="margin: 0;">DIMENSION TABLES</h2>		DRAWING NO. <h2 style="margin: 0;">L-10</h2>
DATE 11/10/11	DEPARTMENT OF PUBLIC WORKS		



EXPANSION JOINT EVERY 20'
 6" P.C.C. CURB BAND TO SEPARATE
 D.G. TRAIL FROM BARE DIRT
 AND GROUND COVER AREAS

1 1/2" MAX., 1" MIN.

BARE DIRT PLANTING AREA

CLASS III AGGREGATE BASE

#4 REBAR, CONTINUOUS

SUBGRADE COMPACTED
 TO 95% DENSITY.

FIRST LAYER OF 2" DEEP D.G. PAVING
 COMPACTED TO 95% DENSITY

SECOND LAYER OF 2" DEEP D.G. PAVING
 COMPACTED TO 95% DENSITY

NOTE: FIRST LAYER OF D.G. SHALL BE COMPACTED
 BEFORE INSTALLATION OF SECOND LAYER.

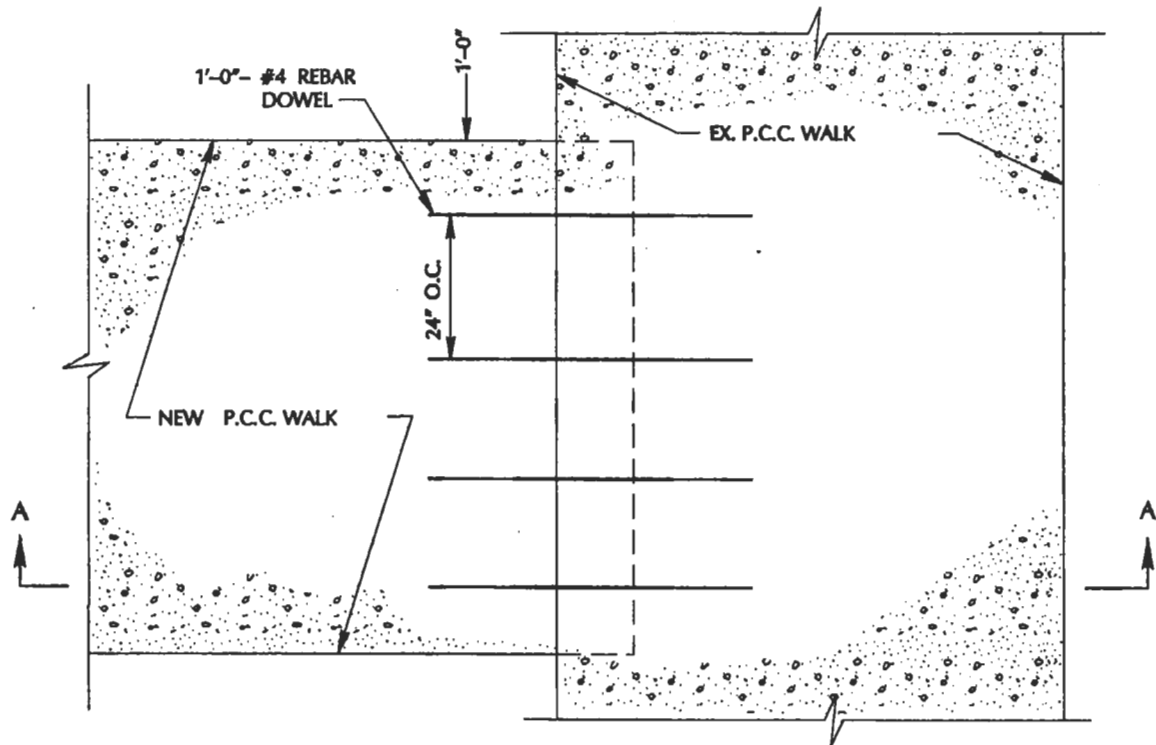
APPROVED BY
 DATE
 11/20/91

DECOMPOSED GRANITE PAVING

DEPARTMENT OF PUBLIC WORKS



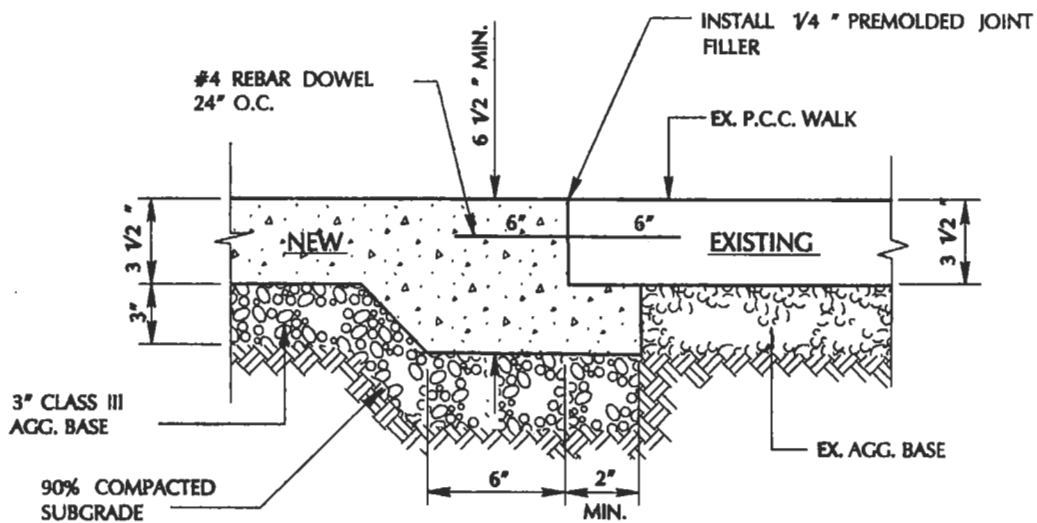
DRAWING NO.
 L-11



PLAN

NOTE:

1. DRILL & EPOXY DOWEL INTO EX. P.C.C. & GREASE OTHER END TO SET INTO NEW CONCRETE.
2. APPLY GREASE TO REBAR END AT NEW WALK ONLY.



SECTION A-A

APPROVED BY

[Signature]

DATE

4/3/92

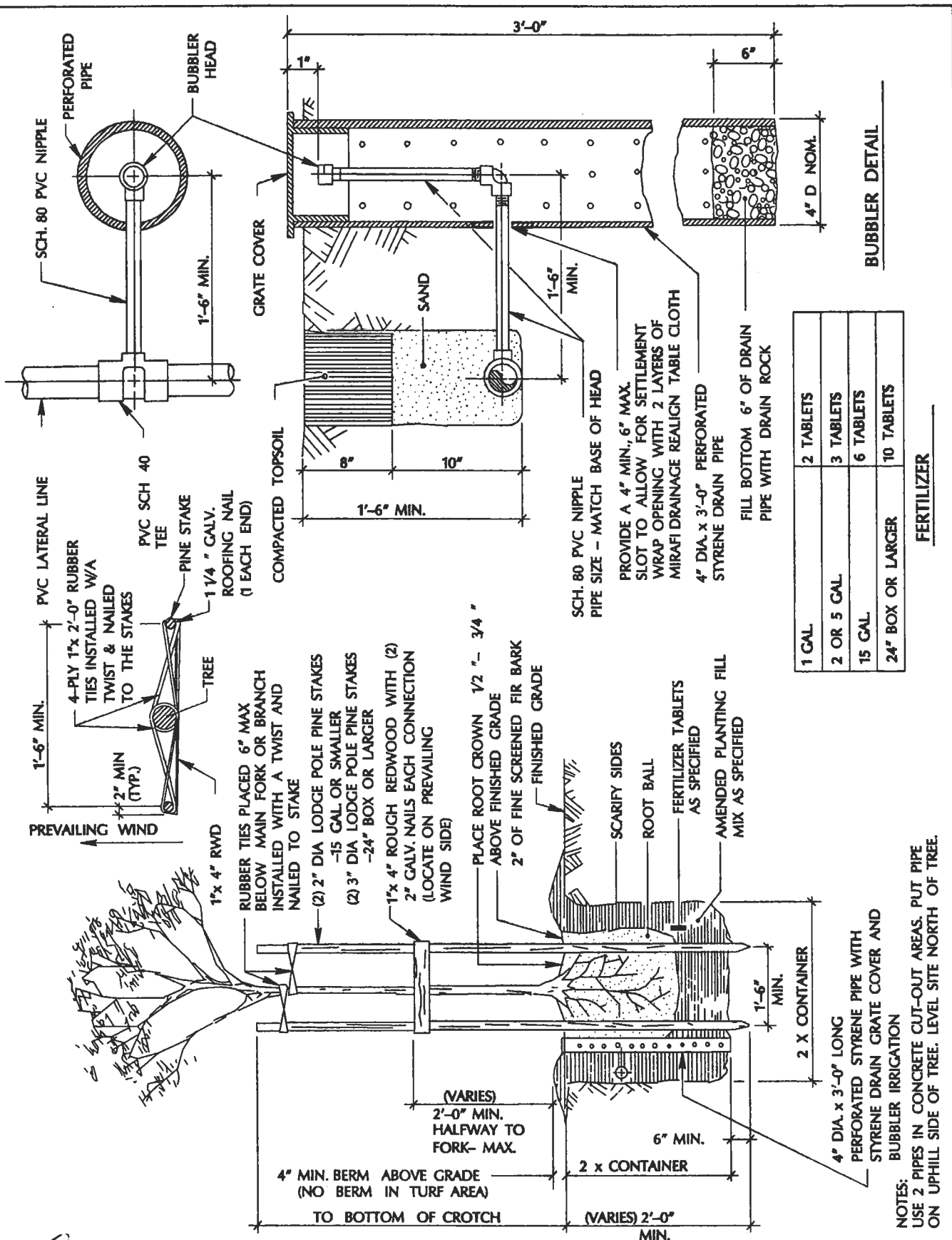
**P.C.C. WALKWAY NEW WALK
TO EXISTING CONNECTION
(TYPICAL)**

DEPARTMENT OF PUBLIC WORKS



DRAWING NO.

L-12



BUBBLER DETAIL

1 GAL.	2 TABLETS
2 OR 5 GAL.	3 TABLETS
15 GAL.	6 TABLETS
24" BOX OR LARGER	10 TABLETS

FERTILIZER

APPROVED BY

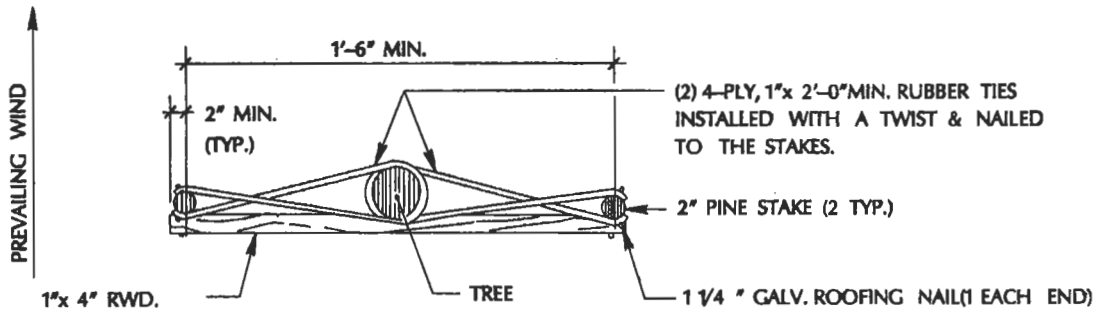
 DATE
 4/3/92

TREE PLANTING WITH BUBBLER IRRIGATION
 DEPARTMENT OF PUBLIC WORKS



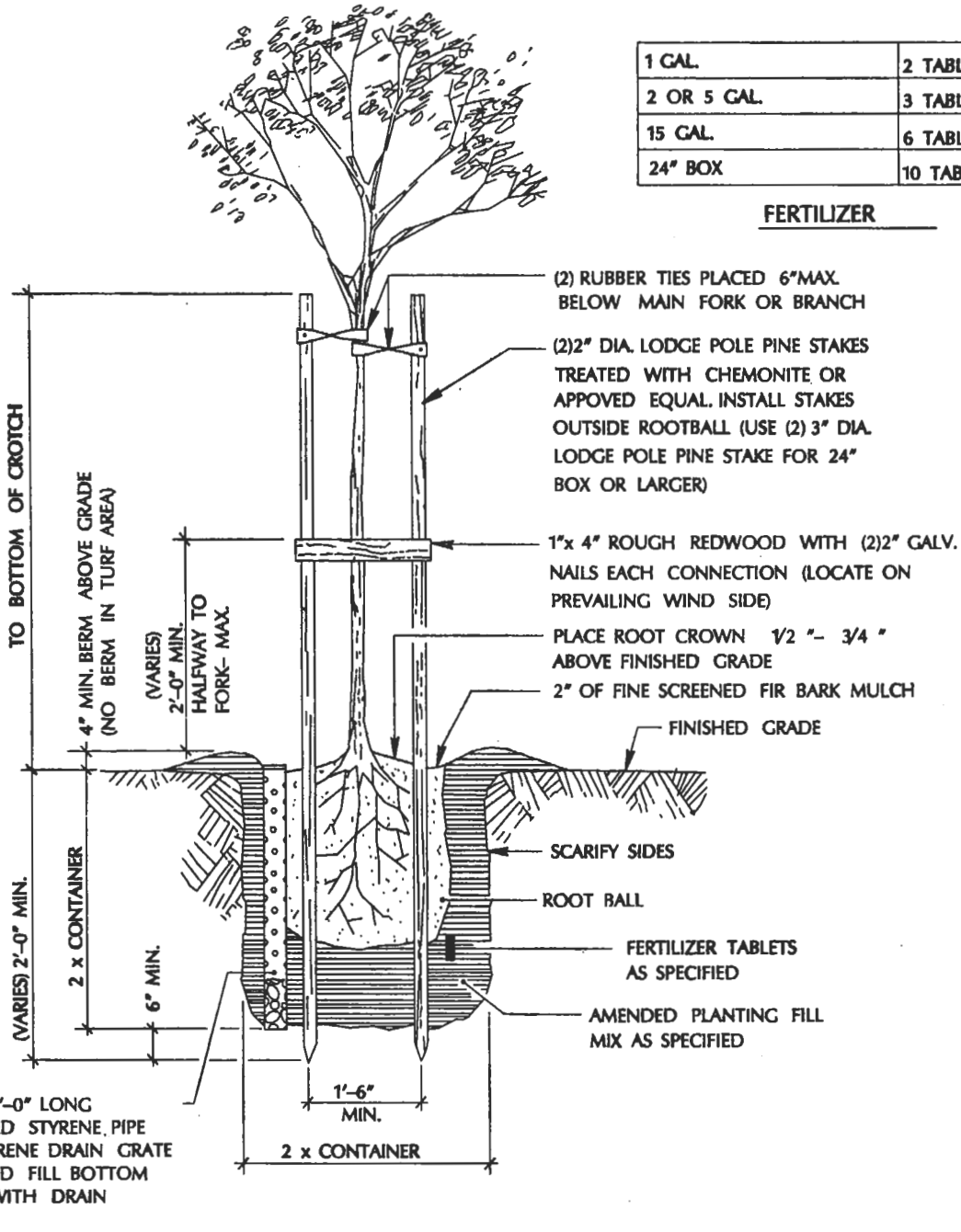
DRAWING NO.
 L-13

NOTES:
 USE 2 PIPES IN CONCRETE CUT-OUT AREAS. PUT PIPE ON UPHILL SIDE OF TREE. LEVEL SITE NORTH OF TREE.



1 GAL.	2 TABLETS
2 OR 5 GAL.	3 TABLETS
15 GAL.	6 TABLETS
24" BOX	10 TABLETS

FERTILIZER

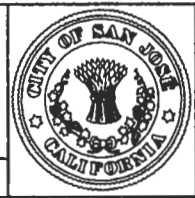


APPROVED BY
[Signature]

DATE
4/3/92

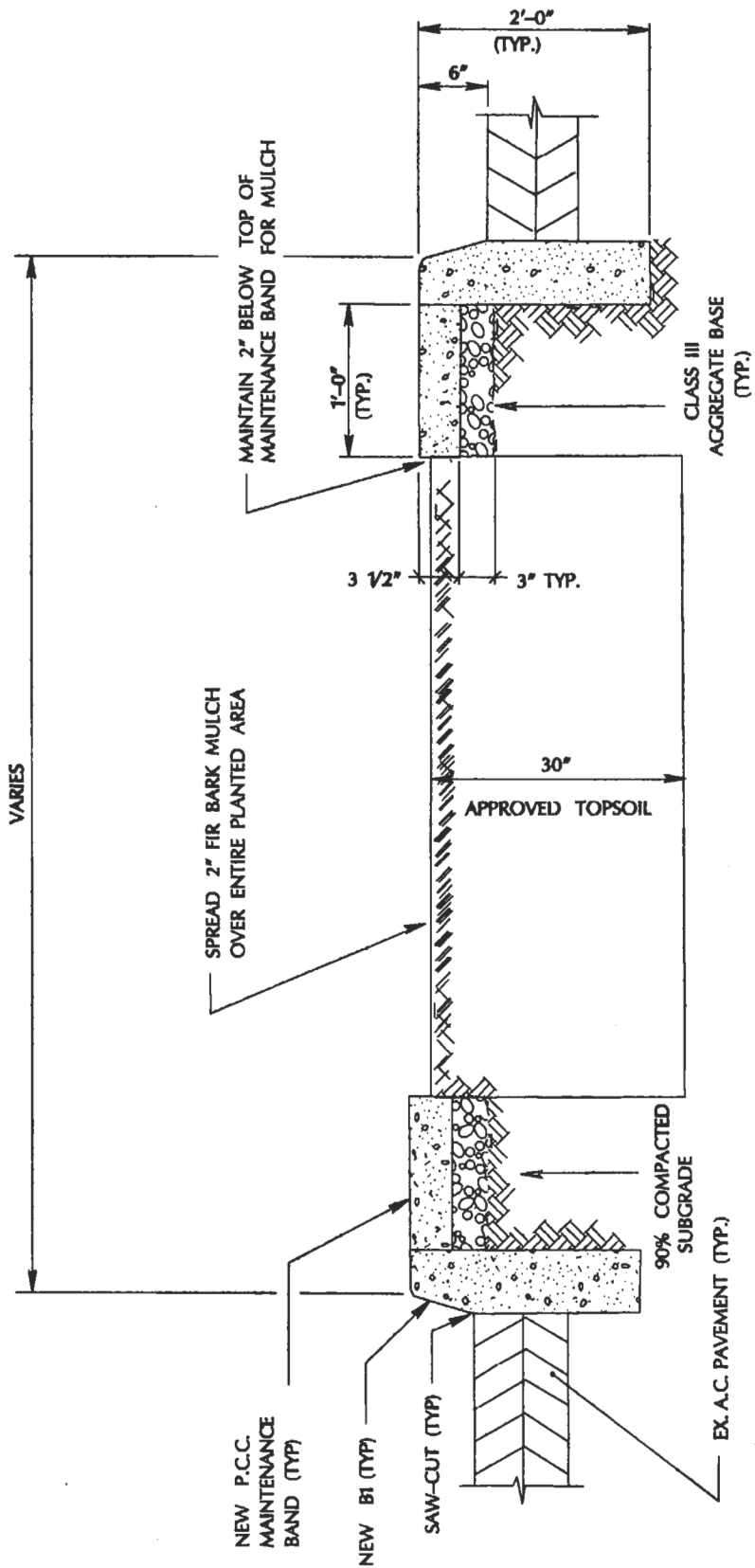
**STANDARD TREE PLANTING
& STAKING DETAIL**

DEPARTMENT OF PUBLIC WORKS



DRAWING NO.

L-14



APPROVED BY

[Signature]

DATE

4/3/92

**TYPICAL MEDIAN ISLAND
CROSS - SECTION
(FOR NEW CURB)**

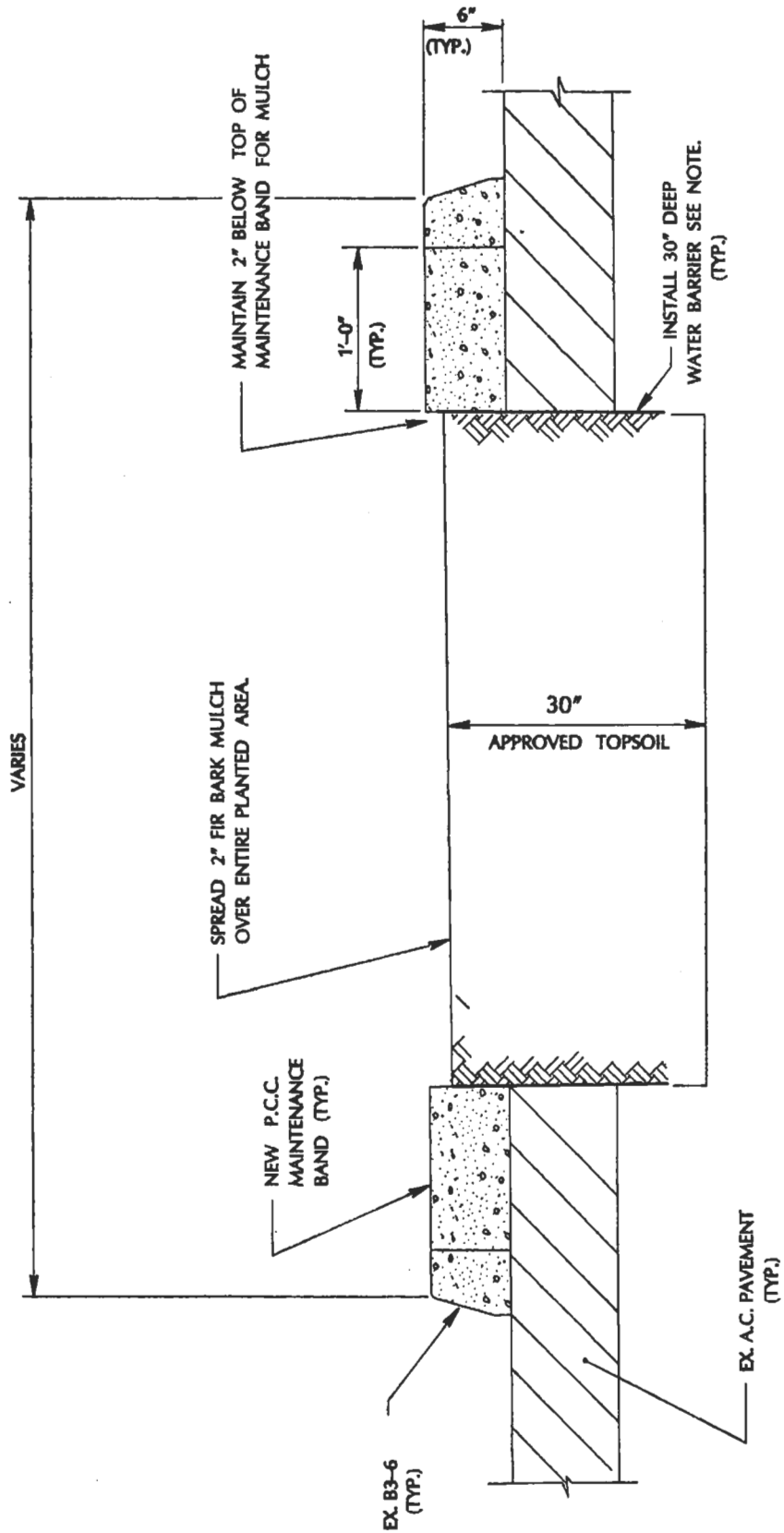
DEPARTMENT OF PUBLIC WORKS



DRAWING NO.

L-15

NOTE: WATER BARRIER SHALL BE "DEEP ROOT WATER BARRIER", ITEM #WB24, MADE OF HIGH IMPACT POLYSTYRENE, .060 INCH THICK, WITH A MINIMUM TENSILE STRENGTH OF 3200 P.S.I., AS MANUFACTURED BY DEEP ROOT CORPORATION, OR APPROVED EQUAL



APPROVED BY

[Signature]

DATE

4/2/92

**MEDIAN ISLAND MAINTENANCE
BAND DETAIL
(FOR EXISTING CURB)**

DEPARTMENT OF PUBLIC WORKS



DRAWING NO.

L-16